

The AMP NETCONNECT Cabling System Products



About the AMP NETCONNECT Business Unit

The AMP NETCONNECT business unit of Tyco Electronics develops, manufactures and supplies a comprehensive range of communications infrastructure products and systems for customers in government, education, healthcare, finance, manufacturing and technology markets. Having established itself as the pre-eminent provider of commercial premises structured cabling systems for optical fibre and twisted-pair copper technologies, Tyco Electronics has broadened its AMP NETCONNECT product portfolio to include a complete line of Intelligent Infrastructure Management Solutions (IIMS). Coupling this spectrum of industry-standard offerings with its excellent customer service, the AMP NETCONNECT group is well positioned as a single-source system provider to meet the disparate communications infrastructure needs of commercial and residential customers.



25-Year System Performance Warranty

Tyco Electronics are confident that your AMP NETCONNECT system will keep performing to current industry standards. If it ever fails to meet those standards within 25 years of the date of installation, Tyco Electronics will provide the reasonable parts and labour to replace or repair the AMP NETCONNECT product.

Who's Covered?

The warranty is between the end-user and Tyco Electronics. This coverage can be provided when you specify AMP NETCONNECT products end-to-end and when an AMP NETCONNECT authorised NETCONNECT Design & Installation (ND&I) contractor registers the project with Tyco Electronics, performs the installation in accordance with Tyco requirements and provides all of the proper test data and documentation to Tyco Electronics.

What's Covered?

Only AMP NETCONNECT authorised NETCONNECT Design & Installation (ND&I) contractors can offer our premier 25-Year System Performance Warranty. This warranty covers the performance of the entire cabling system (cable, connecting hardware and patch cords) for a period of 25 years from the effective date. Each component of the system is covered for defects in materials and workmanship.

The AMP NETCONNECT System Range

Whatever your needs, AMP NETCONNECT has a cabling system to meet them. Each system can be supplied in its entirety, including all the cabling and hardware you need to run your chosen technologies, from 10GBaseT (Ten Gigabit Ethernet) to simple legacy 10Mb/s Ethernet. AMP NETCONNECT cabling systems serve installations of all sizes, from a small number of users within a single building to campus-wide networks with a 3km diameter or a 1 million square metre area and 50,000 users. Importantly, every system we produce is designed to work as a complete end-to-end infrastructure (we test all its components together to assure you of peak performance every time). Even more importantly, every AMP NETCONNECT complete cabling system is application independent, adhering to all relevant ISO/IEC, European and/or US standards and supporting all media types, interconnection options and building environments.

XG Copper Systems

The AMP NETCONNECT XG copper range is designed to the latest next generation cabling standards to support the IEEE 802.3an (10GBaseT) application standard. Look for the XG logo to build the most future-proof system available today.

Category 6/Class E Systems

The AMP NETCONNECT Category 6/Class E system is fully component compliant to the latest standards, offering cost effective 250MHz performance in both shielded and unshielded system options.

Category 5e/Class D Systems

The AMP NETCONNECT Category 5e/Class D systems offer Gigabit performance at entry-level costs. Systems are available in shielded and unshielded options and are fully performance verified to 100MHz.

AMPTRAC

The AMPTRAC intelligent infrastructure management system can be integrated with all copper and fibre systems to add a level of physical management previously unachievable with traditional documentation systems. Coupled with ITRACS software, the AMPTRAC system provides the missing link that integrates network management and physical layer management, revolutionising the way networks are controlled and documented.

OM1, 2, 3 & OS1 Fibre Systems

The AMP NETCONNECT fibre cable systems are capable of running up to 10 Gigabit Ethernet and beyond. A comprehensive range of connectors and pigtails complement the cable range to build high-performance building and campus backbone solutions.

AMP NETCONNECT XG System

The AMP NETCONNECT XG Shielded Copper Cabling System has been developed to offer full IEEE 802.3an (10GBaseT) support, as well as to meet or exceed the channel requirements of the latest CLASS E_A standards and to provide full backward compatibility with Category 6/Class E and Category 5e/Class D systems.

The AMP NETCONNECT XG Shielded Copper Cabling System will provide a cabling channel that will meet the latest Class E_A channel transmission performance parameters to 500 MHz. The system's outstanding Alien NEXT (AXT) suppression has been tested and certified by the independent DELTA laboratories.



AMP F/FTP cable compact PiMF 600

- Compact F/FTP PiMF 600MHz solid conductor cable
- Class E_A performance
- 100mtr IEEE 802.3an (10GBaseT) channel support
- Round diameter of 7.2mm
- White LSZH sheath

Description	Part Number
4 Pair, F/FTP Compact PiMF 600, LSZH, White (500mtr reel)	1711163-1
4 Pair, F/FTP Compact PiMF 600, LSZH, White (1000mtr reel)	1711163-2



AMP XG patch panels

- Industry standard 19 inch mounting 1U high flush mount panel
- Built-in rear cable support
- Accepts up to twenty-four AMP-TWIST jacks
- AMPTRAC ready or full AMPTRAC panel options

Description	Part Number
Flush Mount 1U Panel for 24 AMP-TWIST Jacks	336526-1
AMPTRAC Ready 1U Panel for 24 AMP-TWIST Jacks	1711278-2
Full AMPTRAC 1U Panel for 24 AMP-TWIST Jacks	1711278-1
Upgrade Kit to Convert AMPTRAC Ready to Full AMPTRAC	1711148-4

AMP XG AMP-TWIST jacks

- Die cast metal construction
- Minimises the effects of Alien Crosstalk and Background Noise
- Easy 2 part installation
- Termination using the patented handheld SL termination tool
- Straight 180° or lateral 90° cable exit versions



Description	Part Number
XG AMP-TWIST Jack	1711342-1
XG AMP-TWIST Jack Lateral Cable Exit (90°)	1711343-1

AMP XG patch cords

- Compact S/FTP PiMF 600MHz stranded conductor cable
- Class E_A channel performance
- 100mtr IEEE 802.3an (10GBaseT) channel support
- Standard LSZH sheath in various colour options
- Colour matched snagless boots



Description	Part Number
PiMF 600 Patch Cord, White	Y-959385-X
PiMF 600 Patch Cord, Blue	Y-1711079-X
PiMF 600 Patch Cord, Grey	Y-1711076-X
PiMF 600 Patch Cord, Yellow	Y-1711078-X
PiMF 600 Patch Cord, Red	Y-1711080-X
PiMF 600 Patch Cord, Green	Y-1711077-X

Y- - X = LENGTH (1- -1 = 0.5M, 0- -1 = 1M, 0- -2 = 2M, 0- -3 = 3M, 0- -5 = 5M, 1- -0 = 10M, 1- -5 = 15m, 2- -0 = 20m)

AMP XG single ended patch cords

- Ideal for consolidation points and switch presentation panels
- Compact S/FTP PiMF 600MHz stranded conductor cable
- Class E_A channel performance
- 100mtr IEEE 802.3an (10GBaseT) channel support
- White LSZH sheath
- Colour matched snagless boots

Description	Part Number
PiMF 600 Single Ended Patch Cord, White	Y-1711486-X

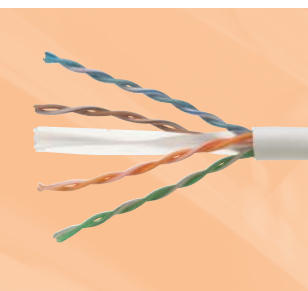
Y- - X = LENGTH (0- -5 = 5M, 1- -4 = 7.5M, 1- -0 = 10M, 1- -5 = 15m, 2- -0 = 20m)



Category

The AMP NETCONNECT Category 6/Class E systems are designed to exceed the performance and bandwidth requirements of the ISO/IEC 11801 2nd Edition and CENELEC 50173 2nd Edition Class E standards. This includes the stringent component compliance requirements, and the systems easily support any twisted pair voice and data application up to Gigabit Ethernet with Zero Bit Errors, as independently tested by Intertek Testing Services (ETL).

Category 6/Class E Unshielded System



Cable

- Category 6 Class E compliant
- UTP 250MHz solid conductor cable
- Positive ACR at 250MHz
- Overall diameter of 5.8mm
- White PVC or LSZH sheath

Description	Part Number
Cat6, 4 Pair UTP, PVC, White (305mtr reel-in-box)	219584-2
Cat6, 4 Pair UTP, LSZH, White (305mtr reel-in-box)	219585-2



Patch panels

- Industry standard 19 inch mounting
- 24 port in a 1U height and 48 port in a 2U height
- Includes 24 or 48 Category 6 SL 110Connect jacks
- Termination using the patented handheld SL termination tool
- Patented bend limiting strain relief included with each jack
- Universal wiring for T568A or T568B
- Full AMPTRAC panel options for IIMS
- Rear management available separately

Description	Part Number
Cat6, UTP, 24 port SL Panel	1375014-2
Cat6, UTP, 48 port SL Panel	1375015-2
Cat6, UTP, 24 port SL AMPTRAC Panel	1435326-1
Cat6, UTP, 48 port SL AMPTRAC Panel	1435327-1
Rear Management Bar 1U	1711314-1

Jacks

- Category 6 Class E compliant
- Patented bend limiting strain relief included with each jack
- Termination using the patented handheld SL termination tool
- Universal wiring for T568A or T568B
- Cables can be dressed at 180° or 90°



Description	Part Number
Cat6, UTP, SL Jack (black, other colours available on request)	1375055-2

Patch cords

- Category 6 Class E compliant
- PVC or LSZH sheath in various colour options
- Colour matched snagless boots



Description	Part Number
Cat6, UTP, PVC, Patch Cord, White	Y-1499001-X
Y- - X = LENGTH (0- -9 = 0.5M, 0- -5 = 1M, 0- -6 = 2M, 0- -7 = 3M, 0- -8 = 5M, 1- -1 = 10M, 1- -3 = 15M, 1- -5 = 20M)	

Cat6, UTP, PVC, Patch Cord, Blue	Y-219886-X
Cat6, UTP, PVC, Patch Cord, Grey	Y-219885-X
Cat6, UTP, PVC, Patch Cord, Yellow	Y-219890-X
Cat6, UTP, PVC, Patch Cord, Red	Y-219888-X
Cat6, UTP, PVC, Patch Cord, Green	Y-219887-X
Y- - X = LENGTH (0- -2 = 0.6M, 0- -3 = 0.9M, 0- -7 = 2.1M, 1- -0 = 3M, 1- -6 = 4.9M, 3- -0 = 9.1M, 5- -0 = 15.2M, 7- -0 = 21.3M)	

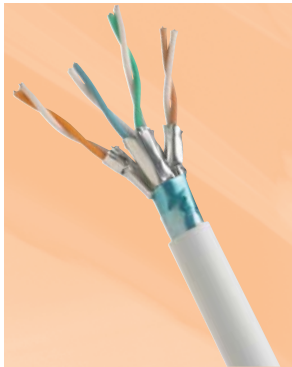
Cat6, UTP, LSZH, Patch Cord, White	Y-1711091-X
Cat6, UTP, LSZH, Patch Cord, Blue	Y-1711094-X
Cat6, UTP, LSZH, Patch Cord, Grey	Y-1711093-X
Cat6, UTP, LSZH, Patch Cord, Yellow	Y-1711097-X
Cat6, UTP, LSZH, Patch Cord, Red	Y-1711096-X
Cat6, UTP, LSZH, Patch Cord, Green	Y-1711095-X
Y- - X = LENGTH (1- -1 = 0.5M, 0- -1 = 1M, 0- -2 = 2M, 0- -3 = 3M, 0- -5 = 5M, 1- -0 = 10M, 1- -5 = 15M, 2- -0 = 20M)	

Single ended patch cords

- Ideal for consolidation points and switch presentation panels
- Category 6 Class E compliant
- UTP 250MHz solid conductor cable
- White LSZH sheath
- Colour matched snagless boots

Cat6, UTP, Solid Core, Single Ended, LSZH, Patch Cord, White	Y-1711167-X
Y- - X = LENGTH (0- -5 = 5M, 1- -4 = 7.5M, 1- -0 = 10M, 1- -5 = 15M, 2- -0 = 20M, 3- -0 = 30M, 5- -0 = 50M)	

6/Class E Systems

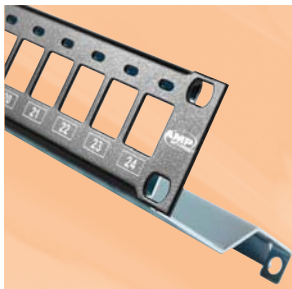


Category 6/Class E Shielded System

Cable

- Category 6 Class E compliant
- Compact F/FTP PiMF 250MHz solid conductor cable
- Positive ACR at 250MHz
- Overall diameter of 7.3mm
- White PVC or LSZH sheath

Description	Part Number
Cat6, 4 Pair, F/FTP Compact PiMF 250, LSZH, White (500mtr reel)	1711007-1
Cat6, 4 Pair, F/FTP Compact PiMF 250, LSZH, White (1000mtr reel)	1711007-2



Patch panels

- Industry standard 19inch mounting 1U high flush mount panel
- Built-in rear cable support
- Accepts up to twenty-four SL 110Connect jacks
- AMPTRAC ready or full AMPTRAC panel options

Description	Part Number
Flush Mount 1U Panel for SL 110Connect Jacks	336526-1
AMPTRAC ready 1U Panel for 24 SL 110Connect Jacks	1711278-2
Full AMPTRAC 1U Panel for 24 SL 110Connect Jacks	1711278-1
Upgrade Kit for AMPTRAC Ready Panel to Full AMPTRAC Panel	1711148-4

Jacks

- Category 6 Class E compliant
- Includes a shield which provides a continuous screen
- Termination using the patented handheld SL termination tool
- Universal wiring for T568A or T568B Straight 180° or lateral 90° cable exit versions



Description	Part Number
Cat6, Shielded SL Jack Straight Cable Exit (180°)	1375188-1
Cat6, Shielded SL Jack Lateral Cable Exit (90°)	1479552-1

Patch cords

- Compact S/FTP PiMF 600MHz stranded conductor cable
- Exceeds Category 6 Class E performance
- Standard LSZH sheath in various colour options
- Colour matched snagless boots



Description	Part Number
PiMF 600 Patch Cord, White	Y-959385-X
PiMF 600 Patch Cord, Blue	Y-1711079-X
PiMF 600 Patch Cord, Grey	Y-1711076-X
PiMF 600 Patch Cord, Yellow	Y-1711078-X
PiMF 600 Patch Cord, Red	Y-1711080-X
PiMF 600 Patch Cord, Green	Y-1711077-X

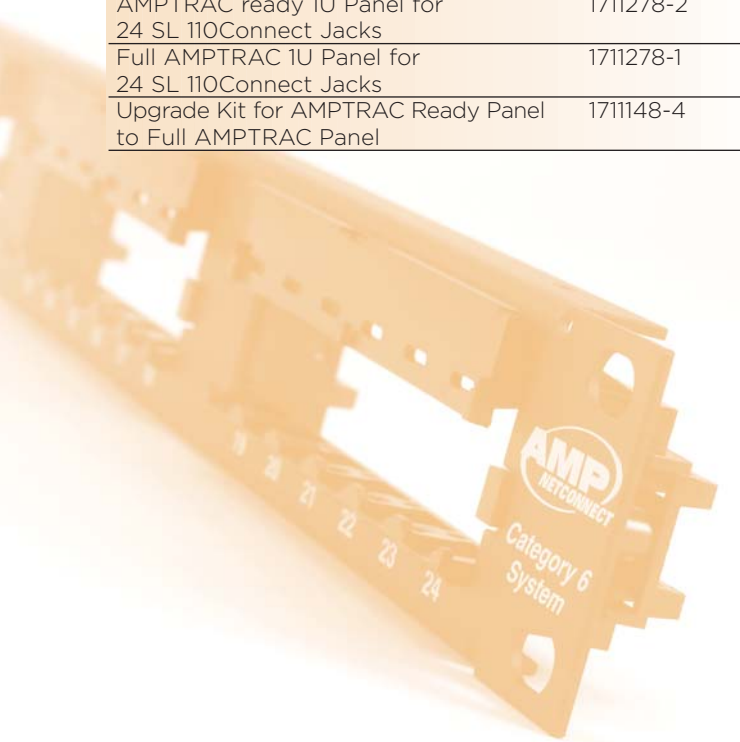
Y- - X = LENGTH (1- -1 = 0.5M, 0- -1 = 1M, 0- -2 = 2M, 0- -3 = 3M, 0- -5 = 5M, 1- -0 = 10M, 1- -5 = 15m, 2- -0 = 20m)

Single ended patch cords

- Ideal for consolidation points and switch presentation panels
- Compact S/FTP PiMF 600MHz stranded conductor cable
- Category 6 Class E performance
- White LSZH sheath
- Colour matched snagless boots

Description	Part Number
PiMF 600 Single Ended Patch Cord, White	Y-1711486-X

Y- - X = LENGTH (0- -5 = 5M, 1- -4 = 7.5M, 1- -0 = 10M, 1- -5 = 15m, 2- -0 = 20m)



Category

The AMP NETCONNECT Category 5e/Class D systems are designed to exceed the performance and bandwidth requirements of the ISO/IEC 11801 2nd Edition and CENELEC 50173 2nd Edition Class D (2002) standards, including the stringent component performance standards. These systems will easily support any twisted pair voice and data application up to Gigabit Ethernet and are independently tested by Intertek Testing Services (ETL).

Category 5e/Class D Unshielded System



Cable

- Category 5e Class D compliant
- UTP 100MHz solid conductor cable
- Overall diameter of 5.0mm
- White PVC or LSZH sheath

Description	Part Number
Cat5e, 4 Pair UTP, PVC, White (305mtr reel-in-box)	57535-2
Cat5e, 4 Pair UTP, LSZH, White (305mtr reel-in-box)	57538-2



Patch panels

- Industry standard 19inch mounting
- 24 port in a 1U height and 48 port in a 2U height
- Includes 24 or 48 Category 5e SL 110Connect jacks
- Termination using the patented handheld SL termination tool
- Patented bend limiting strain relief included with each jack
- Universal wiring for T568A or T568B
- Full AMPTRAC panel options for IIMS
- Rear management available separately

Description	Part Number
Cat5e, UTP, 24 Port SL Panel	1479154-2
Cat5e, UTP, 24 Port SL Panel	1479155-2
Cat5e, UTP, 24 Port SL AMPTRAC Panel	1435367-1
Cat5e, UTP, 48 Port SL AMPTRAC Panel	1435368-1
Rear Management Bar 1U	1711314-1

Jacks

- Category 5e Class D compliant
- Patented bend limiting strain relief included with each jack
- Termination using the patented handheld SL termination tool
- Universal wiring for T568A or T568B
- Cables can be dressed at 180° or 90°



Description	Part Number
Cat5e, UTP, SL Jack (black, other colours available on request)	1375191-2

Patch cords

- Category 5e Class D compliant
- UTP 100MHz stranded conductor cable
- PVC or LSZH sheath in various colour options
- Colour matched snagless boots



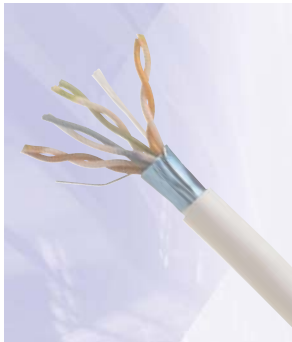
Description	Part Number
Cat5e, UTP, PVC, Patch Cord, White	Y-941761-X
Y- - X = LENGTH (0- -9 = 0.5M, 0- -5 = 1M, 0- -6 = 2M, 0- -7 = 3M, 0- -8 = 5M, 1- -1 = 10M, 1- -3 = 15M)	
Cat5e, UTP, PVC, Patch Cord, Blue	Y-219242-X
Cat5e, UTP, PVC, Patch Cord, Grey	Y-219241-X
Cat5e, UTP, PVC, Patch Cord, Yellow	Y-219246-X
Cat5e, UTP, PVC, Patch Cord, Red	Y-219244-X
Cat5e, UTP, PVC, Patch Cord, Green	Y-219243-X
Y- - X = LENGTH (0- -2 = 0.6M, 0- -3 = 0.9M, 0- -7 = 2.1M, 1- -0 = 3M, 1- -6 = 4.9M, 3- -0 = 9.1M, 5- -0 = 15.2M, 5- -3 = 30.4M)	
Cat5e, UTP, LSZH, Patch Cord, White	Y-1644076-X
Cat5e, UTP, LSZH, Patch Cord, Blue	Y-1711035-X
Cat5e, UTP, LSZH, Patch Cord, Grey	Y-1711038-X
Cat5e, UTP, LSZH, Patch Cord, Yellow	Y-1711037-X
Cat5e, UTP, LSZH, Patch Cord, Red	Y-1711028-X
Cat5e, UTP, LSZH, Patch Cord, Green	Y-1711034-X
Y- - X = LENGTH (1- -1 = 0.5M, 0- -1 = 1M, 0- -2 = 2M, 0- -3 = 3M, 0- -5 = 5M, 1- -0 = 10M, 1- -5 = 15M, 2- -0 = 20M)	

Solid core patch cords

- Ideal for consolidation points and switch presentation panels
- Category 5e Class D compliant
- White LSZH sheath
- Colour matched snagless boots

Description	Part Number
Cat5e, UTP, Solid Core, LSZH, Patch Cord, White	Y-1711183-X
Y- - X = LENGTH (0- -5 = 5M, 1- -4 = 7.5M, 1- -0 = 10M, 1- -5 = 15M, 2- -0 = 20M, 3- -0 = 30M)	

5e/Class D Systems

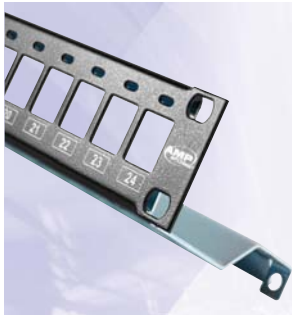


Category 5e/Class D Shielded System

Cable

- Category 5e Class D compliant
- F/UTP 100MHz solid conductor cable
- Overall foil shield
- Overall diameter of 6.2mm
- White PVC or LSZH sheath

Description	Part Number
Cat5e, 4 Pair F/UTP, PVC, White (305mtr reel-in-box)	219420-2
Cat5e, 4 Pair F/UTP, LSZH, White (305mtr reel-in-box)	219413-2



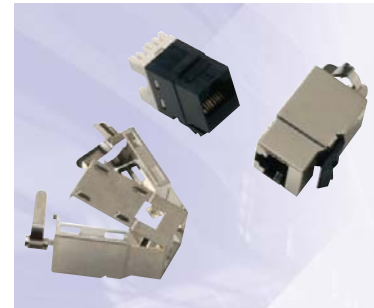
Patch panels

- Industry standard 19inch mounting 1U high flush mount panel
- Built-in rear cable support
- Accepts up to twenty-four shielded SL 110Connect jacks
- AMPTRAC ready or full AMPTRAC panel options

Description	Part Number
Flush Mount 1U Panel for 24 SL 110Connect Jacks	336526-1
AMPTRAC Ready 1U Panel for 24 SL 110Connect Jacks	1711278-2
Full AMPTRAC 1U Panel for 24 SL 110Connect Jacks	1711278-1
Upgrade Kit to Convert AMPTRAC Ready to Full AMPTRAC	1711148-4

Jacks

- Category 5e Class D compliant
- Includes a shield to provide a continuous screen
- Termination using the patented handheld SL termination tool
- Universal wiring for T568A or T568B
- Straight 180° or lateral 90° cable exit versions



Description	Part Number
Cat5e, Shielded, SL Jack Straight Cable Exit (180°)	1375189-1
Cat5e, Shielded, SL Jack Lateral Cable Exit (90°)	1479717-1

Patch cords

- Category 5e Class D compliant
- F/UTP 100MHz stranded conductor cable
- PVC or LSZH sheath in various colour options
- Colour matched snagless boots



Description	Part Number
Cat5e, F/UTP, LSZH, Patch Cord, White	Y-1644077-X
Cat5e, F/UTP, LSZH, Patch Cord, Blue	Y-959308-X
Cat5e, F/UTP, LSZH, Patch Cord, Grey	Y-959305-X
Cat5e, F/UTP, LSZH, Patch Cord, Yellow	Y-959307-X
Cat5e, F/UTP, LSZH, Patch Cord, Red	Y-959309-X
Cat5e, F/UTP, LSZH, Patch Cord, Green	Y-959306-X

Y- - X = LENGTH (1- -1 = 0.5M, 0- -1 = 1M, 0- -2 = 2M, 0- -3 = 3M, 0- -5 = 5M, 1- -0 = 10M, 1- -5 = 15m, 2- -0 = 20M)

Single ended patch cords

- Ideal for consolidation points and switch presentation panels
- F/UTP 100MHz solid conductor cable
- Category 5e Class D performance
- White LSZH sheath
- Colour matched snagless boots

Description	Part Number
Cat5e, F/UTP, Single Ended, LSZH, Patch Cord, White	Y-1711444-X

Y- - X = LENGTH (0- -5 = 5M, 1- -4 = 7.5M, 1- -0 = 10M, 1- -5 = 15M, 2- -0 = 20M, 3- -0 = 30M)



The AMP NETCONNECT fibre optic systems have been designed and optimised to offer a complete end-to-end solution, manufactured to exceed the IEEE 802.3z distances for Gigabit Ethernet and are guaranteed to support IEEE 802.3ae distances for 10 Gigabit Ethernet applications whilst supporting legacy applications.

Cable

- Available in OM1, OM2, OM3 (XG) and OS1 variants
- Tight Buffered and Loose Tube constructions
- Universal Low Smoke Zero Halogen Sheath
- Internal/External
- Exceed ISO/IEC 11801 and CENELEC EN50173 performance requirements

Description	Part Number
OM1, 62.5/125, 200/600 4 core Int/Ext Tight Buffered	2-599144-5
OM1, 62.5/125, 200/600 8 core Int/Ext Tight Buffered	2-599146-5
OM1, 62.5/125, 200/600 12 core Int/Ext Tight Buffered	2-599148-5
OM1, 62.5/125, 200/600 16 core Int/Ext Tight Buffered	2-599149-5
OM1, 62.5/125, 200/600 24 core Int/Ext Tight Buffered	2-1716029-5

OM1, 62.5/125, 200/600 4 core Int/Ext Dry Loose Tube	2-599152-5
OM1, 62.5/125, 200/600 8 core Int/Ext Dry Loose Tube	2-599154-5
OM1, 62.5/125, 200/600 12 core Int/Ext Dry Loose Tube	2-599156-5
OM1, 62.5/125, 200/600 16 core Int/Ext Dry Loose Tube	2-599157-5
OM1, 62.5/125, 200/600 24 core Int/Ext Dry Loose Tube	2-599159-5

OM2, 50/125, 500/500 4 core Int/Ext Tight Buffered	2-599144-7
OM2, 50/125, 500/500 8 core Int/Ext Tight Buffered	2-599146-7
OM2, 50/125, 500/500 12 core Int/Ext Tight Buffered	2-599148-7
OM2, 50/125, 500/500 16 core Int/Ext Tight Buffered	2-599149-7
OM2, 50/125, 500/500 24 core Int/Ext Tight Buffered	2-1716029-7

OM2, 50/125, 500/500 4 core Int/Ext Dry Loose Tube	2-599152-7
OM2, 50/125, 500/500 8 core Int/Ext Dry Loose Tube	2-599154-7
OM2, 50/125, 500/500 12 core Int/Ext Dry Loose Tube	2-599156-7
OM2, 50/125, 500/500 16 core Int/Ext Dry Loose Tube	2-599157-7
OM2, 50/125, 500/500 24 Core Int/Ext Dry Loose Tube	2-599159-7

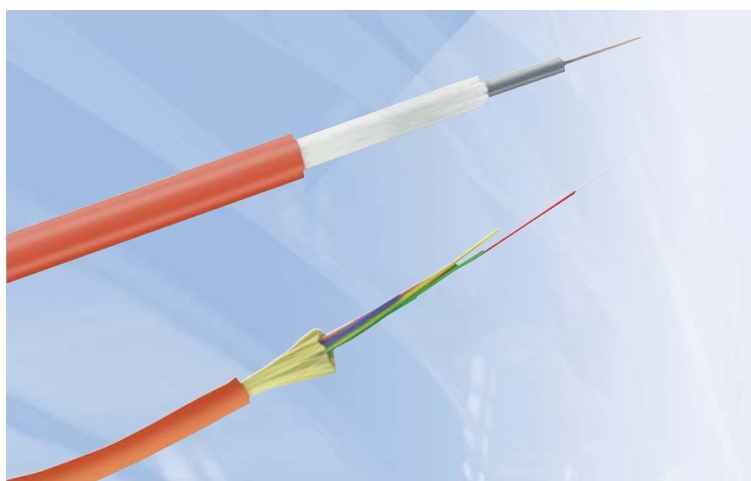
OM3, 50/125, XG 4 core Int/Ext Tight Buffered	2-599144-3
OM3, 50/125, XG 8 core Int/Ext Tight Buffered	2-599146-3
OM3, 50/125, XG 12 core Int/Ext Tight Buffered	2-599148-3
OM3, 50/125, XG 16 core Int/Ext Tight Buffered	2-599149-3
OM3, 50/125, XG 24 core Int/Ext Tight Buffered	2-1716029-3

OM3, 50/125, XG 4 core Int/Ext Dry Loose Tube	2-599152-3
OM3, 50/125, XG 8 core Int/Ext Dry Loose Tube	2-599154-3
OM3, 50/125, XG 12 core Int/Ext Dry Loose Tube	2-599156-3
OM3, 50/125, XG 16 core Int/Ext Dry Loose Tube	2-599157-3
OM3, 50/125, XG 24 core Int/Ext Dry Loose Tube	2-599159-3

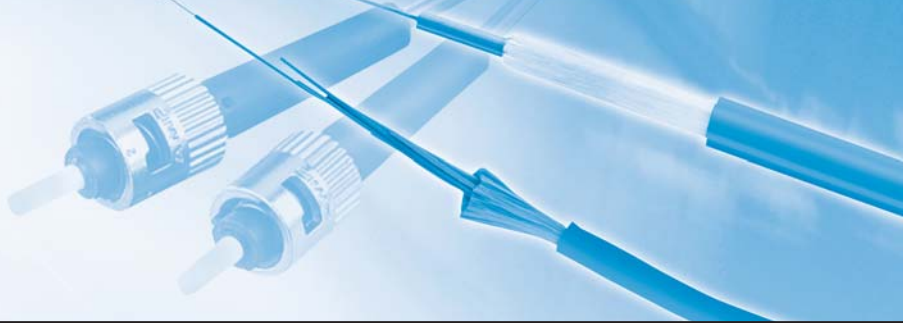
OS1, 9/125, SM 4 core Int/Ext Tight Buffered	2-599144-4
OS1, 9/125, SM 8 core Int/Ext Tight Buffered	2-599146-4
OS1, 9/125, SM 12 core Int/Ext Tight Buffered	2-599148-4
OS1, 9/125, SM 16 core Int/Ext Tight Buffered	2-599149-4
OS1, 9/125, SM 24 core Int/Ext Tight Buffered	2-1716029-4

OS1, 9/125, SM 4 core Int/Ext Dry Loose Tube	2-599152-4
OS1, 9/125, SM 8 core Int/Ext Dry Loose Tube	2-599154-4
OS1, 9/125, SM 12 core Int/Ext Dry Loose Tube	2-599156-4
OS1, 9/125, SM 16 core Int/Ext Dry Loose Tube	2-599157-4
OS1, 9/125, SM 24 core Int/Ext Dry Loose Tube	2-599159-4

Other constructions and core counts available on request



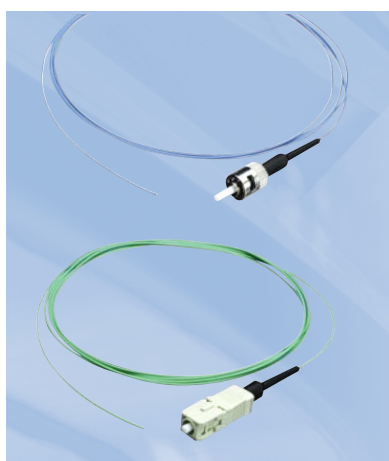
Optic Systems



Patch panels

- ST, SC and LC variants
- Multimode and Singlemode versions available
- Industry standard 19inch mounting 1U high
- Tilt out drawer design for easy termination
- 220mm and 300mm deep versions available
- Includes management rings and metric glands
- Supplied pre-loaded with adaptors

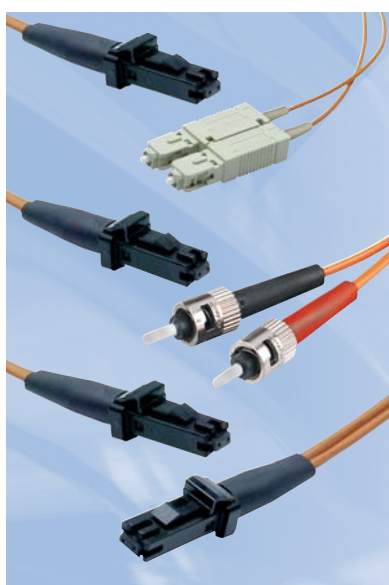
Description	300mm deep	220mm deep
ST-Style, Multimode		
With 12 Adaptors	2-1206114-4	2-1206480-4
With 24 Adaptors	4-1206114-4	4-1206480-4
SC Duplex, Multimode		
With 6 Adaptors	2-1206138-4	2-1206505-4
With 12 Adaptors	4-1206138-4	4-1206505-4
With 24 Adaptors	4-1206343-4	
SC Duplex, Singlemode		
With 6 Adaptors	2-1348960-4	2-1671017-4
With 12 Adaptors	4-1348960-4	4-1671017-4
With 24 Adaptors	4-1671002-4	
LC Duplex, Multimode		
With 12 Adaptors	2-1671000-8	
With 24 Adaptors	4-1671000-8	
LC Duplex, Singlemode		
With 12 Adaptors	2-1671000-4	
With 24 Adaptors	4-1671000-4	



Fibre optic pigtails

- ST, SC and LC variants
- Available in OM1, OM2, OM3 (XG) and OS1 variants
- Factory terminated and individually tested
- Exceed ISO/IEC 11801 and CENELEC EN50173 performance requirements

Description	Part Number
OM1, 62.5/125, ST, 1 Metre	5349582-2
OM1, 62.5/125, SC, 1 Metre	5349584-2
OM1, 62.5/125, LC, 1 Metre	6536974-1
OM2, 50/125, ST, 1 Metre	5345969-2
OM2, 50/125, SC, 1 Metre	5349568-2
OM2, 50/125, LC, 1 Metre	6536975-1
OM3, 50/125, XG, SC, 1 Metre	6536555-1
OM3, 50/125, XG, LC, 1 Metre	6536966-1
OS1, 9/125, SC, 1 Metre	5233266-2
OS1, 9/125, LC, 1 Metre	6536879-1



Fibre optic patch cords

- Available in OM1, OM2, OM3 (XG) and OS1 variants
- Low Smoke Zero Halogen Sheath

- Factory terminated and individually tested
- Exceed ISO/IEC 11801 and CENELEC EN50173 performance requirements

ST - ST Duplex	Y-5349574-X	Y-5349561-X	Y-6206158-X
ST - SC Duplex	Y-5349580-X	Y-5349567-X	
ST - MTRJ Duplex	Y-6206616-X	Y-6206620-X	
SC - SC Duplex	Y-5349578-X	Y-5349565-X	Y-6536464-X
SC - LC Duplex	Y-6536510-X	Y-6536509-X	Y-6536967-X
SC - MTRJ Duplex	Y-6206615-X	Y-6206619-X	Y-6536463-X
LC - LC Duplex	Y-6536503-X	Y-6536502-X	Y-6536969-X
LC - MTRJ Duplex	Y-6536513-X	Y-6536512-X	Y-6536968-X
MTRJ - MTRJ Duplex	Y-6206613-X	Y-6206617-X	Y-6536462-X

Y- - X = LENGTH (0- -1 = 1M, 0- -2 = 2M, 0- -3 = 3M, 0- -5 = 5M)

Accessories

Faceplates and Adaptors

The AMP NETCONNECT modular faceplates and adaptors are available in UK style Euro & LJ6c, DIN, Mosaic & Swiss. Supplied in white and complete with a label field and plastic cover, they are compatible with AMP-TWIST and SL 110connect jacks.

UK LJ6c faceplates and adaptors

Description	Part Number
Single Port LJ6c Unloaded Faceplate	1711301-1
Dual Port LJ6c Unloaded Faceplate	1711302-1
Single Shuttered LJ6c Adaptor	1711348-1
Single Shuttered LJ6c Angled Adaptor	1859096-1
LJ6c Blank Plate	1711491-1

UK Euro faceplates and adaptors

Description	Part Number
Single Gang Euro 50mm x 50mm Unloaded Faceplate	1711399-1
Double Gang Euro 50mm x 100mm Unloaded Faceplate	1711400-1
Single Shuttered Euro Angled 25mm x 50mm Adaptor	1711275-1
Quarter Blank Plate 12.5mm x 50mm	1711404-1
Half Blank Plate 25mm x 50mm	1711403-1

DIN faceplates

Description	Part Number
DIN Flushmount 3 Port Angled Outlet (50x50 plate 80x80 frame)	1711537-2
DIN Flushmount 3 Port Angled Outlet (50x50 plate)	1711485-2
DIN flushmount 3 Port Angled Outlet UPO (mounting frame only)	1711490-1

Mosaic faceplates

Description	Part Number
Dual outlet 45 x 45mm angled for SL 110Connect Jacks	336793-1
Dual outlet 45 x 45mm (for 2 AMP-TWIST w/o shutter)	1711417-1
Faceplate 45x 45mm	1711307-1

Swiss EDIZIOdue faceplates

Description	Part Number
Dual EDIZIOdue compatible UP Faceplate	1711168-1
Dual EDIZIOdue compatible KNL Faceplate	1711169-1
Dual EDIZIOdue compatible AP Faceplate	5-0101016-7

SL Termination Tool

The AMP NETCONNECT SL Jack Termination Tool Kit has everything required to produce quick, reliable terminations of Category 5e, Category 6 and XG connector jacks. The tool assembly has a low impact IDC connection method and a lacing fixture that makes handling of the jack and prepared cable very straightforward.



The built-in jacket stripper makes cable preparation clean and fast (no fumbling for a separate cutter) while the lacing fixture is extremely simple to use - it has a cable clamp that holds the cable in place while all eight of the conductors are laced into the wire positioning slots, making sure the conductors stay in place during the termination process.

After the conductors are laced, the jack is placed on top of the lacing fixture, the assembly is placed into the tool, the handle is depressed and all eight conductors are terminated and automatically trimmed.

The result is a perfectly terminated jack that, when inserted into a wall plate, floor box or panel, ensures a consistent, accurate termination with maintained twisted pair integrity.

Description	Part Number
SL Series Termination Tool with Lacing Fixture and Pouch	1725150-1



AMPTRAC Infrastructure Management System

The AMPTRAC Infrastructure Management System turns cabling systems and their connected devices into intelligent networks, by reducing costly and time-consuming manual cable management. With this system, you can track and document all moves, additions and changes to your network from a centralised location as they occur. This fully automated system optimises asset utilisation, maintains accurate documentation and helps prevent costly errors.

The AMPTRAC Infrastructure Management System's easy to implement hardware coupled with iTRACS cutting-edge software can be integrated into new or existing networks.

By allowing you to proactively respond to any changes in connectivity through customisable alerts or alarms, the iTRACS software optimises your network monitoring and security.

AMPTRAC hardware, when used in conjunction with iTRACS software provides the missing link that integrates network management and physical layer management - revolutionising the way networks are controlled and documented. This one-of-a-kind infrastructure management system automatically generates a complete physical topology of your network at the Telecommunications Room/Data Center, while helping you manage and troubleshoot the network remotely.

System features and benefits

- Reduces downtime and response time
- Integrates network and physical layer management
- Helps to increase productivity
- Reduces operating costs
- Improves port and asset utilisation
- Provides accurate and timely information
- Improves service levels
- Supports Cat 5e, Cat 6 and fibre optic networks
- Analysers sized for enterprise and branch locations

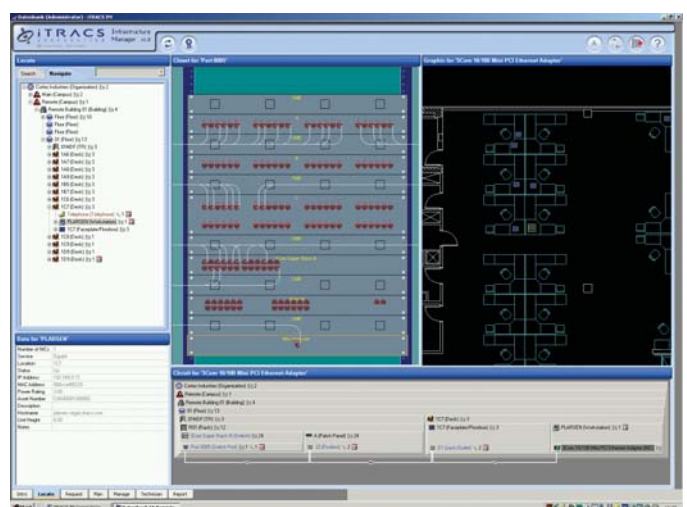


Analysers

The AMPTRAC Infrastructure Management System Analyser discovers connects/disconnects and communicates the port ID information in real-time to the AMPTRAC database software over a TCP-IP connection. When a patch cord is inserted or removed from a port, the AMPTRAC sensory circuit immediately notifies the database software to update and document the change in connectivity. This provides network administrators responsible for small to enterprise-wide multi-site networks, with vital time saving up to the minute information about the status of their network from the hardware layer up. Any change in connectivity can be checked and authorised verified, and if appropriate, action taken if the action is unauthorised.

A full range of interconnecting hardware including Analysers, Patch Panels, Patch Cords, and I/O Cables are available to complete the AMPTRAC solution.

Please call for further details.



AMP NETCONNECT Regional Headquarters:

North America

Harrisburg, PA, USA
Ph: +1-800-553-0938
Fx: +1-717-986-7406

Latin America

Buenos Aires, Argentina
Ph: +54-11-4733-2200
Fx: +54-11-4733-2282

Europe

Kessel-Lo, Belgium
Ph: +32-16-35-1011
Fx: +32-16-35-2188

Mid East & Africa

Cergy-Pontoise, France
Ph: +33-1-3420-2122
Fx: +33-1-3420-2268

Asia

Hong Kong, China
Ph: +852-2735-1628
Fx: +852-2735-1625

Pacific

Sydney, Australia
Ph: +61-2-9554-2600
Fx: +61-2-9554-2519

AMP NETCONNECT in Europe, Middle East, Africa and India:

Austria - Vienna

Ph: +43-1-90560-1204
Fx: +43-1-90560-1270

Denmark - Glostrup

Ph: +45-70-15-52-00
Fx: +45-43-44-14-14

Greece/Cyprus - Athens

Ph: +30-210-9370-396
Fx: +30-210-9370-655

Lithuania - Vilnius

Ph: +370-5-2131-402
Fx: +370-5-2131-403

Romania - Bucharest

Ph: +40-21-311-3479
Fx: +40-21-312-0574

Switzerland - Steinach

Ph: +41-71-447-0-447
Fx: +41-71-447-0-423

Belgium - Kessel-Lo

Ph: +32-16-35-1011
Fx: +32-16-35-2188

Finland - Helsinki

Ph: +358-95-12-34-20
Fx: +358-95-12-34-250

Hungary - Budapest

Ph: +36-1-289-1007
Fx: +36-1-289-1010

Netherlands - Den Bosch

Ph: +31-73-6246-246
Fx: +31-73-6246-958

Russia - Moscow

Ph: +7-495-790-7902
Fx: +7-495-721-1894

Turkey - Istanbul

Ph: +90-212-281-8181
Fx: +90-212-281-8184

Bulgaria - Sofia

Ph: +359-2-971-2152
Fx: +359-2-971-2153

France - Cergy-Pontoise

Ph: +33-1-3420-2122
Fx: +33-1-3420-2268

India - Bangalore

Ph: +91-80-4011-5000
Fx: +91-80-4011-5030

Norway - Nesbru

Ph: +47-66-77-88-99
Fx: +47-66-77-88-55

Spain - Barcelona

Ph: +34-93-291-0330
Fx: +34-93-291-0608

Ukraine - Kiev

Ph: +380-44-206-2265
Fx: +380-44-206-2264

Czech Rep./Slov. - Kurim

Ph: +420-541-162-112
Fx: +420-541-162-132

Germany - Langen

Ph: +49-6103-709-1547
Fx: +49-6103-709-1219

Italy - Collegno (Torino)

Ph: +39-011-4012-111
Fx: +39-011-4012-268

Poland - Warsaw

Ph: +48-22-4576-700
Fx: +48-22-4576-720

Sweden - Upplands Väsby

Ph: +46-8-5072-5000
Fx: +46-8-5072-5001

UK - Stanmore, Middx

Ph: +44-208-420-8140
Fx: +44-208-954-7467

